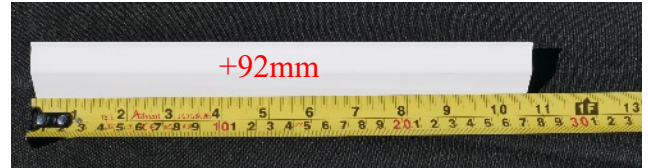




Step 1

Measure the Perfect fit Frame and add 92mm



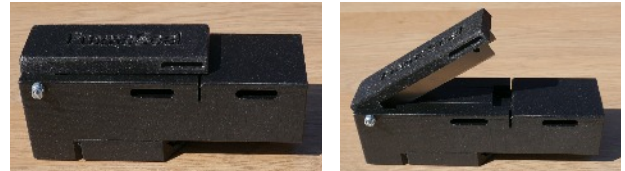
Step 2

Mark the Frameseal and cut with knife



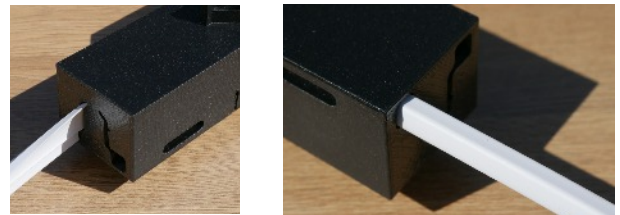
Step 3

Open the cutting head on the tool, **take note the blades are very sharp !**



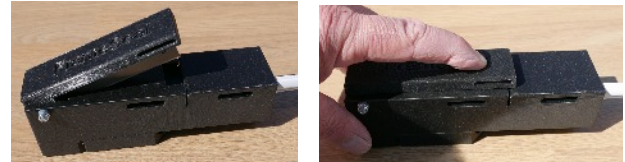
Step 4

Slide one end of the Frameseal into the cutting block



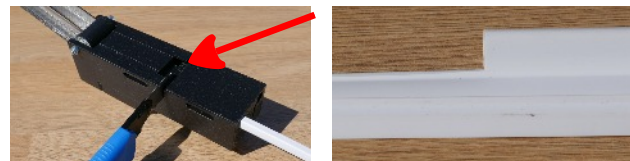
Step 5

Close the cutting head and press until fully closed



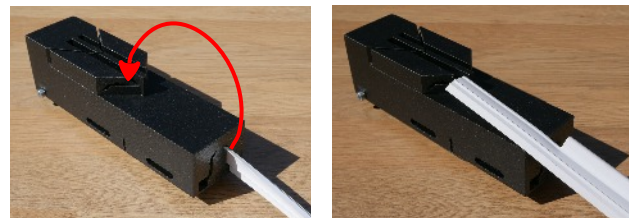
Step 6

Open the cutting head and cut as show in the picture, the Frameseal should now have the tail cut.



Step 7

Slide the Framseal from the block and reinsert into the opposite side of the guide for the angle cut as shown



Take great care when using the tool, the blades are very sharp.

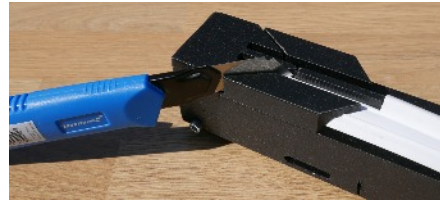
Step 8

Slide the Framseal into the cutting block as shown.



Step 9

Using the utility knife cut the angle as shown



Repeat the process for the other end of the Framseal



Slide the Frameseal into the perfect fit frame, build the frame and fit onto the window



Adjust any gaps at the corners using your finger



Take great care when using the tool, the blades are very sharp.